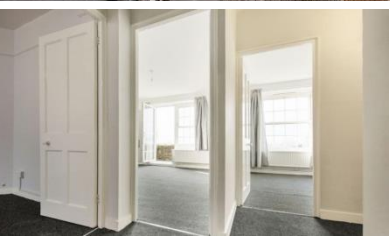


Major Estate Refurbishment



Client: Metropolitan Housing Trust
Location: Section 'E' New Park Road, London SW2
Value: £1.2m
Duration: 9 months
Year: 2016



TCL were appointed in late 2015 to undertake external/internal refurbishment works to a number of 1920's built occupied blocks of flats located within the Clapham Park Estate.

The works commenced in January 2015 and completed in September 2016..

Planning and the adoption of proven corrective measures enabled us to minimise access issues to enable the requirements of the programme to be maintained.

Scope of Works:

- Roofing , soffits, fascias and rainwater goods
- Internal & External Decorations
- Window Repairs/Replacement
- Brickwork and Concrete Repairs
- Light refurbishment works to external fabric of blocks of flats
- Kitchen & Bathroom Upgrades
- Electrical rewiring
- External hard and soft landscaping works to car parking areas, pedestrian walkways and common areas