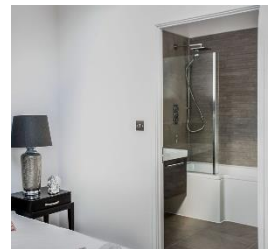
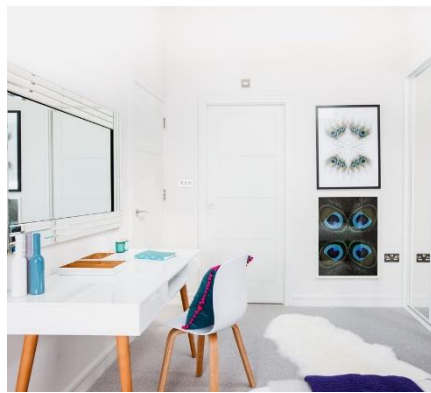


# Contemporary Living Luxury 2-Bedroom Apartments



**Client:** Private Developer  
**Location:** North Finchley, London N12

A stunning selection of 2-bedroom luxury apartments with a contemporary design



TCL Residential  
Unit A Melville Court  
Spilsby Road  
Harold Hill  
Romford  
Essex RM3 8SB

Tel: 0208 539 7977  
[www.tclgroup.uk.com](http://www.tclgroup.uk.com)